


# Pattern Spotting!

Patterns are repeated shapes.

Like these ones... 



In the Museum you will find patterns on different objects, like...

...Masks...

...Textiles...

...Weapons and Armour...  
Hint! Look on the top floor! 

...Pottery...

...Beadwork...

...Baskets...

## Shape

Can you find an object with a pattern made from...



...circles?



...diamonds?



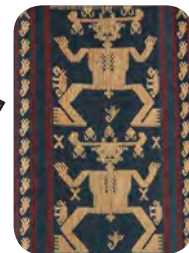
...zigzags?



...flowers?

Tick them off when you find them.

If a pattern is made up of shapes that looks like a real object or person it is called **figurative**.



If a pattern is made up of shapes that do not look like real objects or figures, it is called **abstract**.



# Form

Patterns can be created in different ways.

Find a pattern which is...

What is the object?

...carved:

---

...painted:

---

...woven:

---

# Symmetry

Patterns are often symmetrical.

Find an object with a symmetrical pattern on it.

Draw it below - if you can, draw in the line of symmetry.

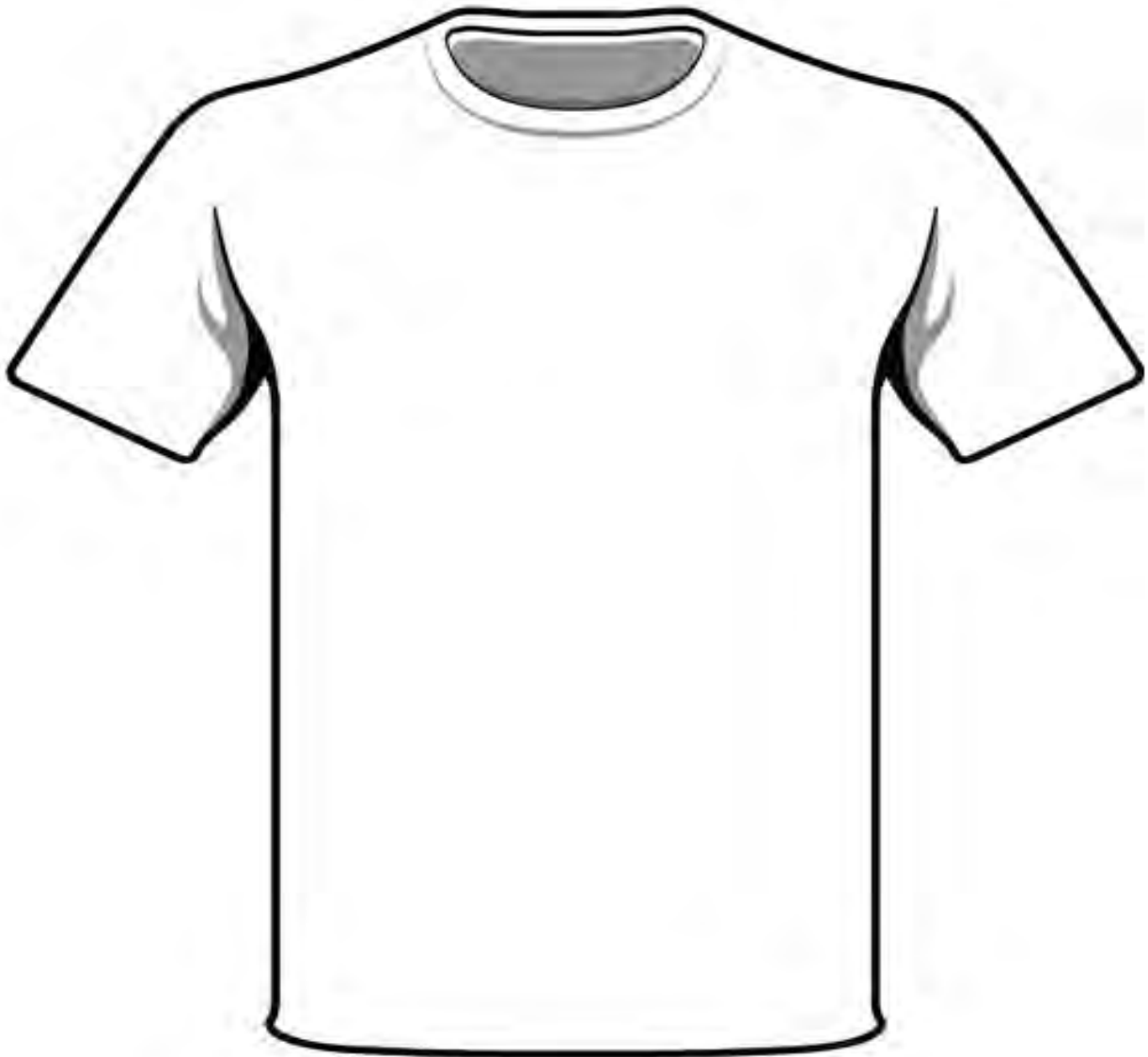


Line of symmetry

Symmetry is when one shape becomes exactly like another if you flip, slide or turn it.

# Style

Find patterns you like around the Museum and use them to decorate this T-shirt.



How would you describe the pattern?

*...symmetrical?*

*...simple?*

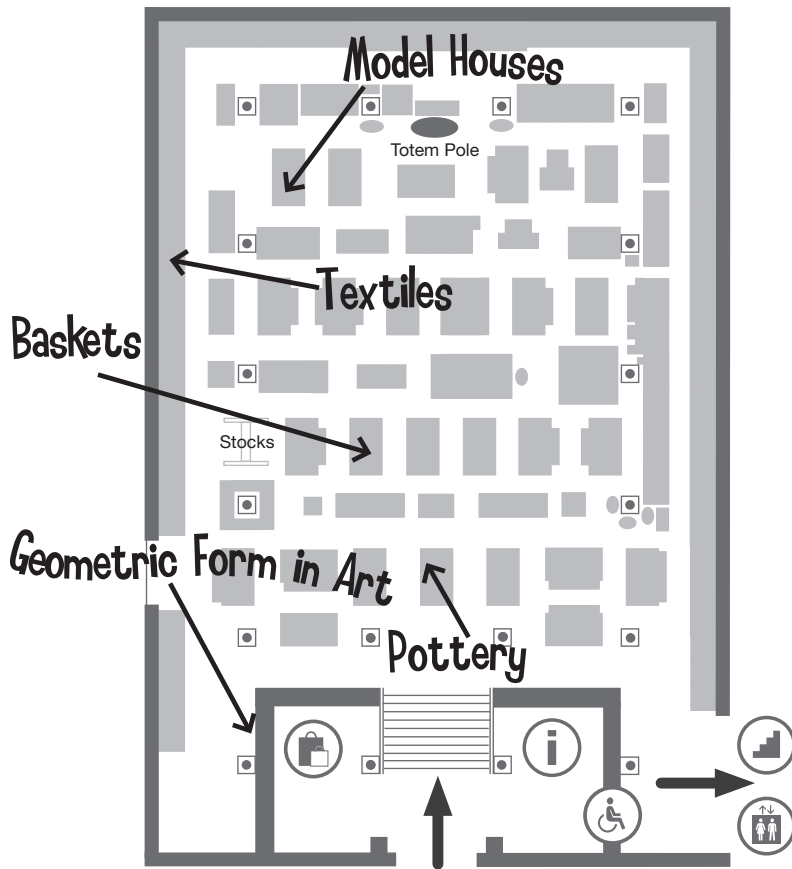
*...crazy?*

*...busy?*

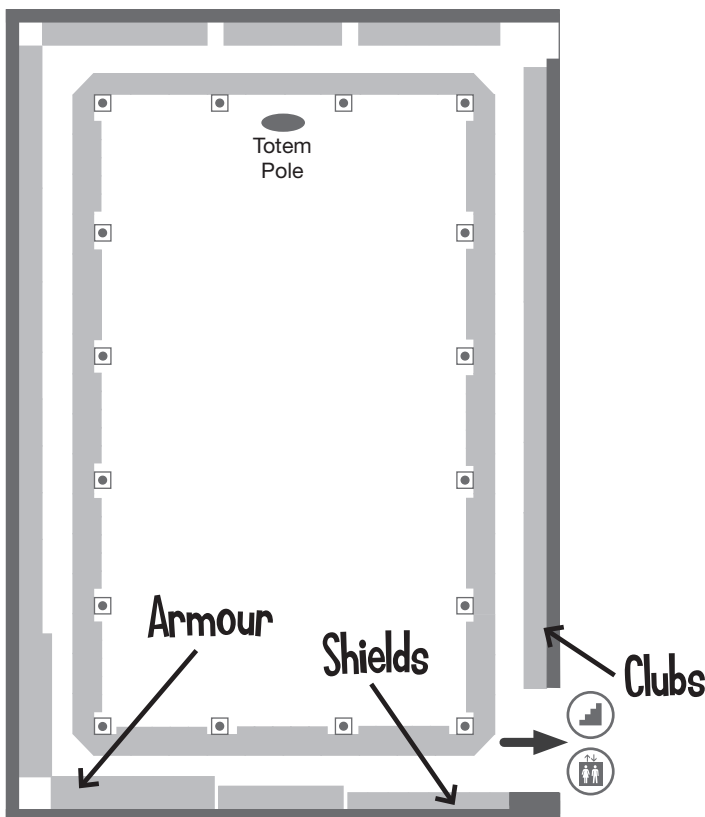
*...abstract?*

*...figurative?*

Stuck for ideas? Here are some great places to find patterns...



## Court (Ground Floor)



## Upper Gallery (2nd Floor)