

Everywhere you look in the museum you'll see patterns. Patterns on...

textiles

baskets

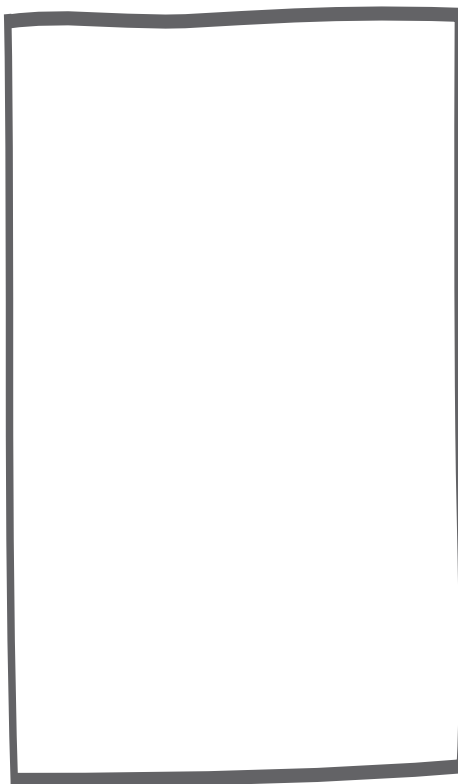
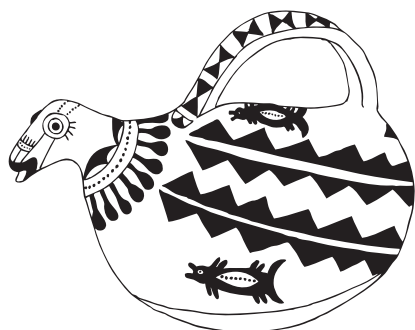
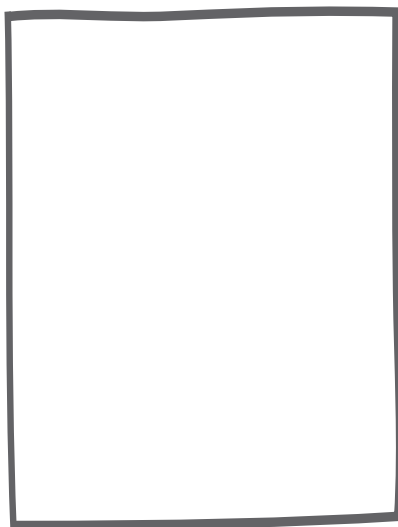
models

pottery

beadwork

Patterns in the Pitt Rivers

Which are your favourites?
Draw them in these boxes:



What shapes can you see in the patterns?

Circle the ones you find:

diamonds

squares

circles

triangles

stars

rectangles



Stuck for ideas?

Here are some great places to find patterns:

