

Information for Taught Museum Session:

Africa and Benin

Guided Trail

Use objects to build a picture of civilisation in Benin, and investigate power and status objects from across Africa.

Key stage 1 & 2

National Curriculum Subject Areas:

History Benin (West Africa): a non-European society that provides contrasts with British history

Geography Human and physical geography

Art Know about craftmakers

Length of session: 75 minutes

Maximum group size: 32

Session Outline

- Welcome to the Museum (10 minutes)
- Interactive guided tour of African objects around the Museum, including object handling (40 minutes)
- Self-guided activity sheet, pencils provided (20 minutes)
- Plenary (5 minutes)
- Please organise groups to have a ratio of one Education Guide to every ten pupils
- Please allow for extra time if you want to visit the shop, or explore the Museum further

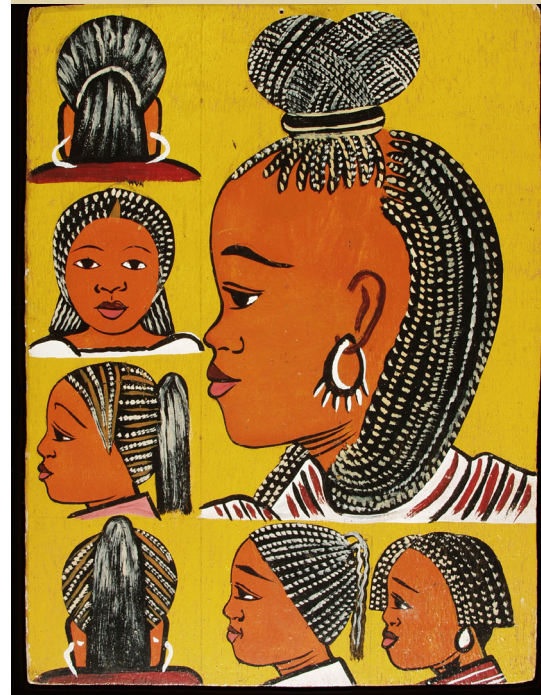
Learning Outcomes

Aims

- Build up a picture of how status was conveyed by the King and Court of Benin
- Examine the ideas of status, chieftainship, ancestors, beliefs, crafts and music across African society

Key concepts

- King and Court of Benin
- Status and chieftainship
- Crafts and music



“The Guides were very knowledgeable and interacted well with the children.” (Yr3 teacher)

“If I was allowed to go to any museum, I would choose Pitt Rivers.” (Yr6)

Pre-visit activities

- Find modern Benin city, Nigeria and West Africa on a map and explore what the environment is like.
- Explore ideas of monarchy and different types of palaces. Think about how people might convey they are important.

Post-visit activities

- Identify objects of high status in British society and the materials they are made from.
- Design your own Benin palace taking inspiration from designs seen in the Museum.
- Design a mask to be worn in a celebration of your community.

Booking information:

Booking is essential for all groups

We require a ratio of 1 adult to 10 pupils

Monday 12.00 – 4.30

Tuesday to Sundays 10.00 – 4.30

01865 613031

education@prm.ox.ac.uk

www.prm.ox.ac.uk

Pitt Rivers Museum, South Parks Road, Oxford OX1 3PP

Access is gained through the Oxford University Museum of Natural History.

Visits to this Museum must be booked separately using these contact details:

01865 282451 education@oum.ox.ac.uk

Facilities

- Lunch can be eaten on the Museum lawn or in the University Parks in fine weather. If you require a space for lunch please discuss this when making your booking.
- The museum is fully accessible to visitors with disability, with an adapted toilet and lift to all floors. A disabled parking space may be booked in advance.

The cost for this session is £100. By supporting the Museum with this charge you are helping us meet some of the costs that go towards running our educational activities and ensuring that we can continue to develop new and exciting sessions for schools.

